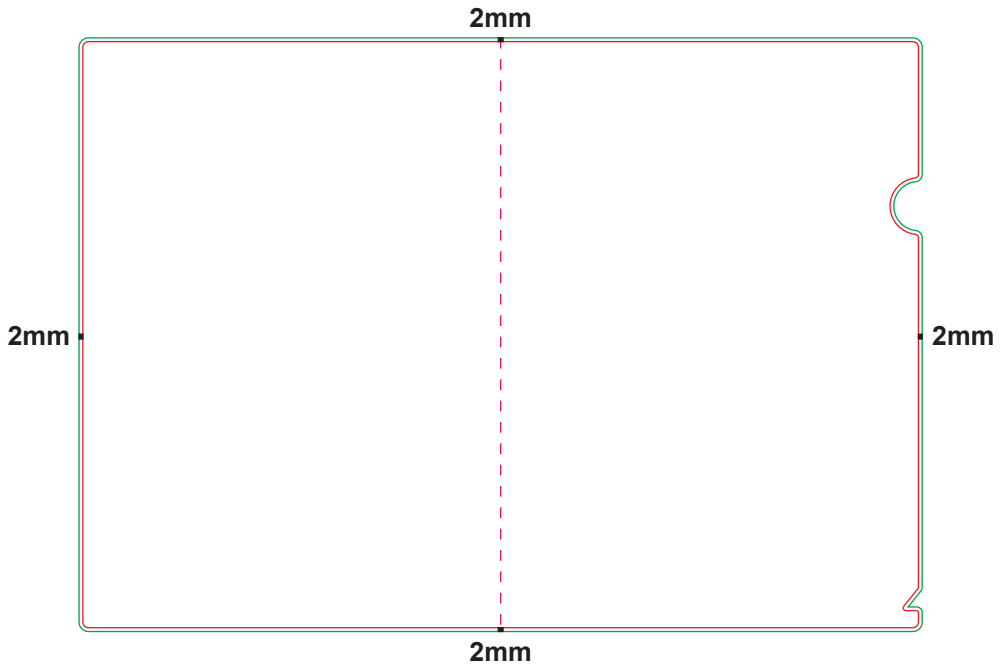
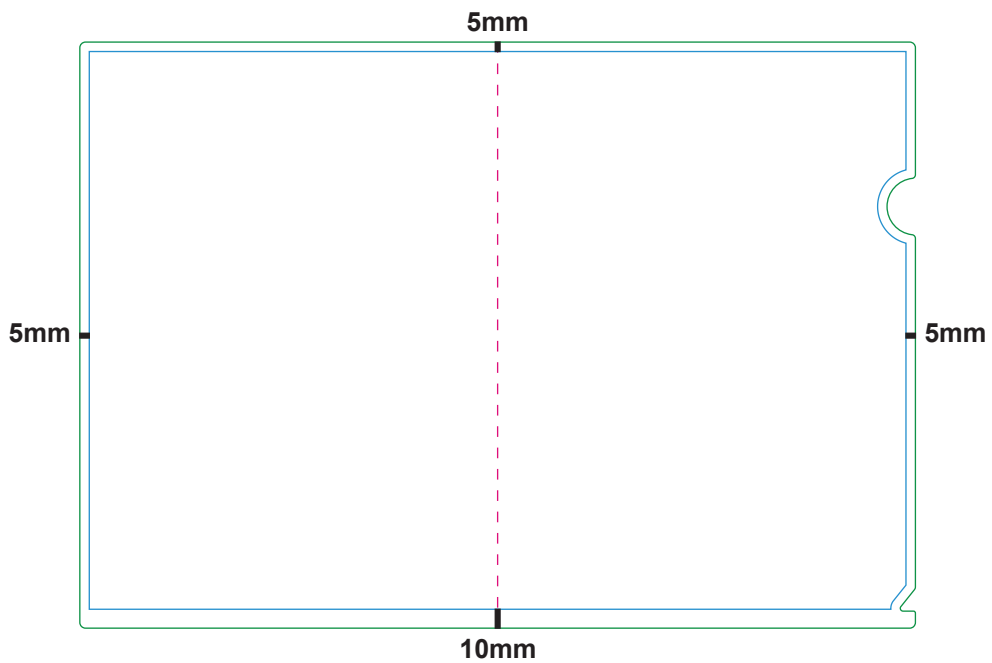


**BLEEDING & SAFE ZONE**

► Bleeding : **2mm** from all edge.



► Safe Zone : **5mm** for top, left & right edges. While **10mm** for bottom edge.



**ARTWORK PRECAUTION**

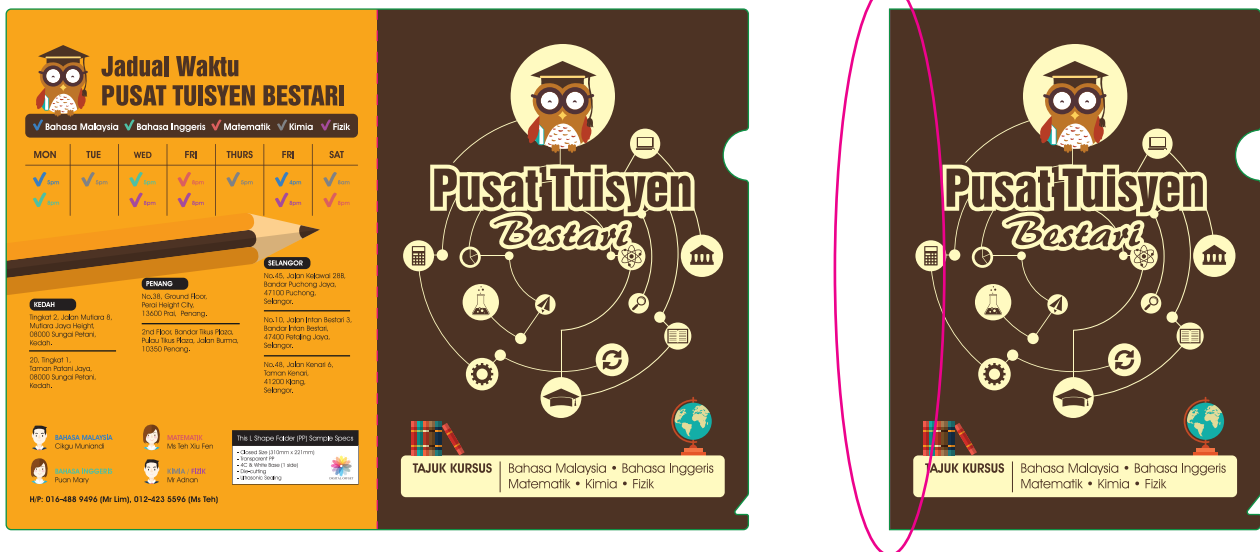
▶ Folding Tolerance : **+1mm**

Recommend to use same background colour while prepare artwork to avoid colour overlap onto other page after folding.



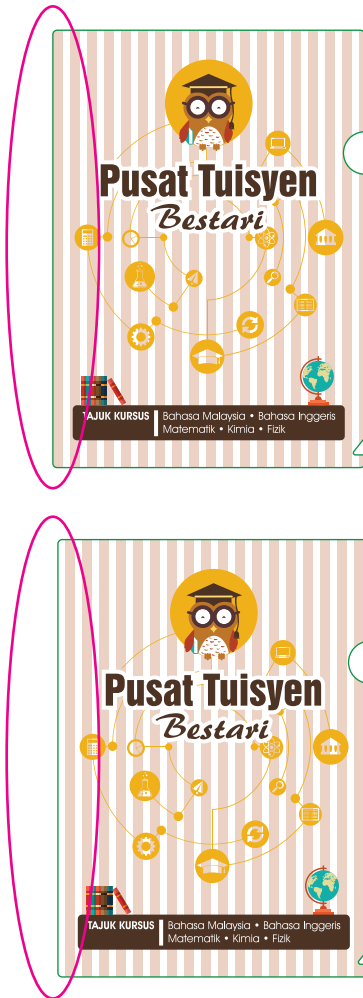
**IMPORTANT: PLEASE AVOID YOUR ARTWORK CONTAIN DESIGN OR LAYOUT AS BELOW:**

▶ 1. Different Colour Background



**IMPORTANT: PLEASE AVOID YOUR ARTWORK CONTAIN DESIGN OR LAYOUT AS BELOW:**

▶ 2. Background artwork with stripe design



▶ 3. Extended graphic on the folding line



**REMARK: EXCARD WILL NOT HELD ANY RESPONSIBILITY IN THE CIRCUMSTANCES SHOWN AS ABOVE.**

**SUBMIT ARTWORK FOR L-SHAPE PLASTIC FOLDER FILE**

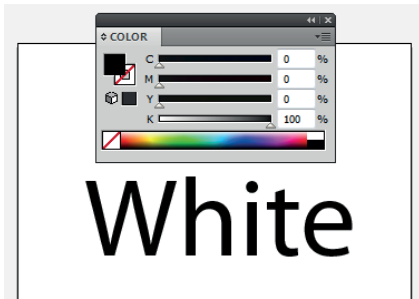
Print Colour	File
4C	1 <sup>st</sup> page : CMYK printing
4C + White	1 <sup>st</sup> page : CMYK printing 2 <sup>nd</sup> page : White Base artwork

**IMPORTANT NOTES IN PREPARING WHITE BASE ARTWORK**

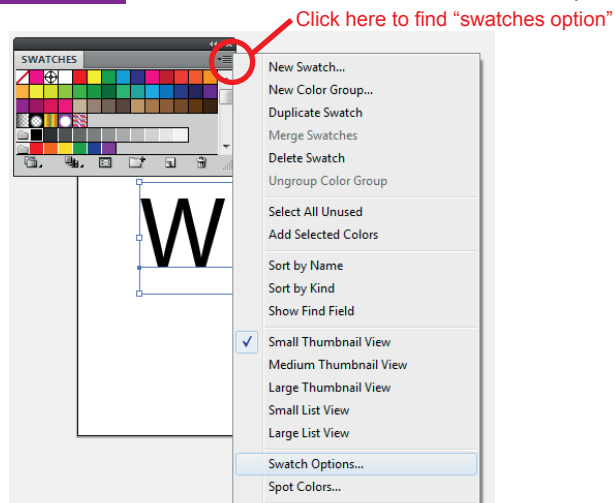
- Fill the artwork with black (K100) to indicate the area for white base.
- Rename colour to precisely **“White”** to indicate the area of white base instead “WHITE” or “white”
- \*Excard will not held responsibility on any wrong white spot colour naming error.  
(eg. “WHITE” or “white” or “White(space)” )
- Only use Adobe Illustrator to prepare the white base artwork.
- JPEG file format or JPEG save in PDF format is not allowed while prepare white based artwork.
- White based artwork must prepare in **VECTOR**

**Rename the color swatch name by using Adobe Illustrator**

**STEP 1** Fill colour with K100

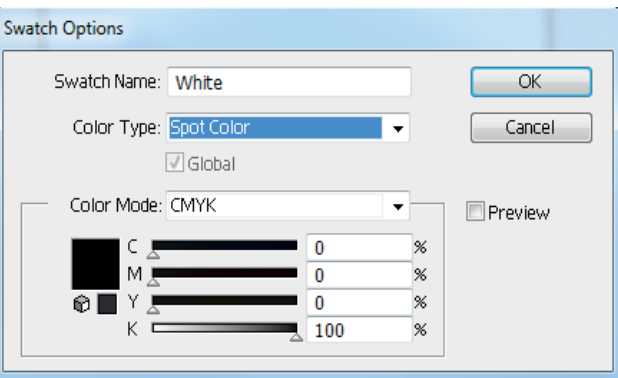


**STEP 2** Windows > Swatches > Swatches option



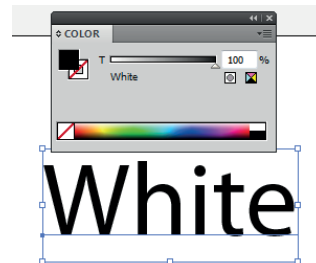
**STEP 3**

At swatch option choose color mode to **“Spot Color”** and rename the swatch name to **“White”**



**STEP 4**

Double confirm by checking the artwork is filled with **K100** with **“White”** swatch name.



Rename colour to precisely **“White”**

- **“W”** must in **CAPITAL LETTER**
- Make sure no space after “e”

**STANDARD CHECKLIST :****COLOUR**

- Use ONLY CMYK colour mode in your artwork
- No colour tints (toning) lower than 10%
- Do not set black colour to (C=100 M= 100 Y= 100 K= 100)
- Make sure the value between colours are at least 10% of different. (Tint / toning effect more obvious)

**LINE**

- Line weight not less than 0.25points  
(Not applicable for Pre-Inked stamp,spot UV,Hot Stamping)

**IMAGES**

- All images are in CMYK colour mode
- Resolution of all images are set to or above 300dpi.
- Scanned line Art/Black & White images resolution are set to or above 1200dpi.
- Do not manipulate images using a layout program

**TEXT**

- No font less than 4points
- Curve / Path / Create outline all fonts

**ARTWORK**

- Artwork is prepared in our Product Size Templates
- Background design expand to Full Bleed size
- No crop mark are applied
- Ensure artwork orientation

**DESIGN**

- All images have been exported / converted : Background, design effects, photos, images to TIFF files (not including text / vector images)
- Never manipulate images in layout program resolution: 300 dpi
- Color Mode: CMYK color mode

**FILE FORMAT**

- Artwork is saved in required file format : Adobe acrobat Document 4 – Ver 1.3 (\*.pdf)
- Resolution: 300 dpi
- Color Mode: CMYK color mode

**FILE NAME**

- abc\_f

**MARKING & TRAPPING**

- Never apply any crop mark or trapping onto the files.