

**GENERAL ARTWORK DIMENSION - ROUND NECK**

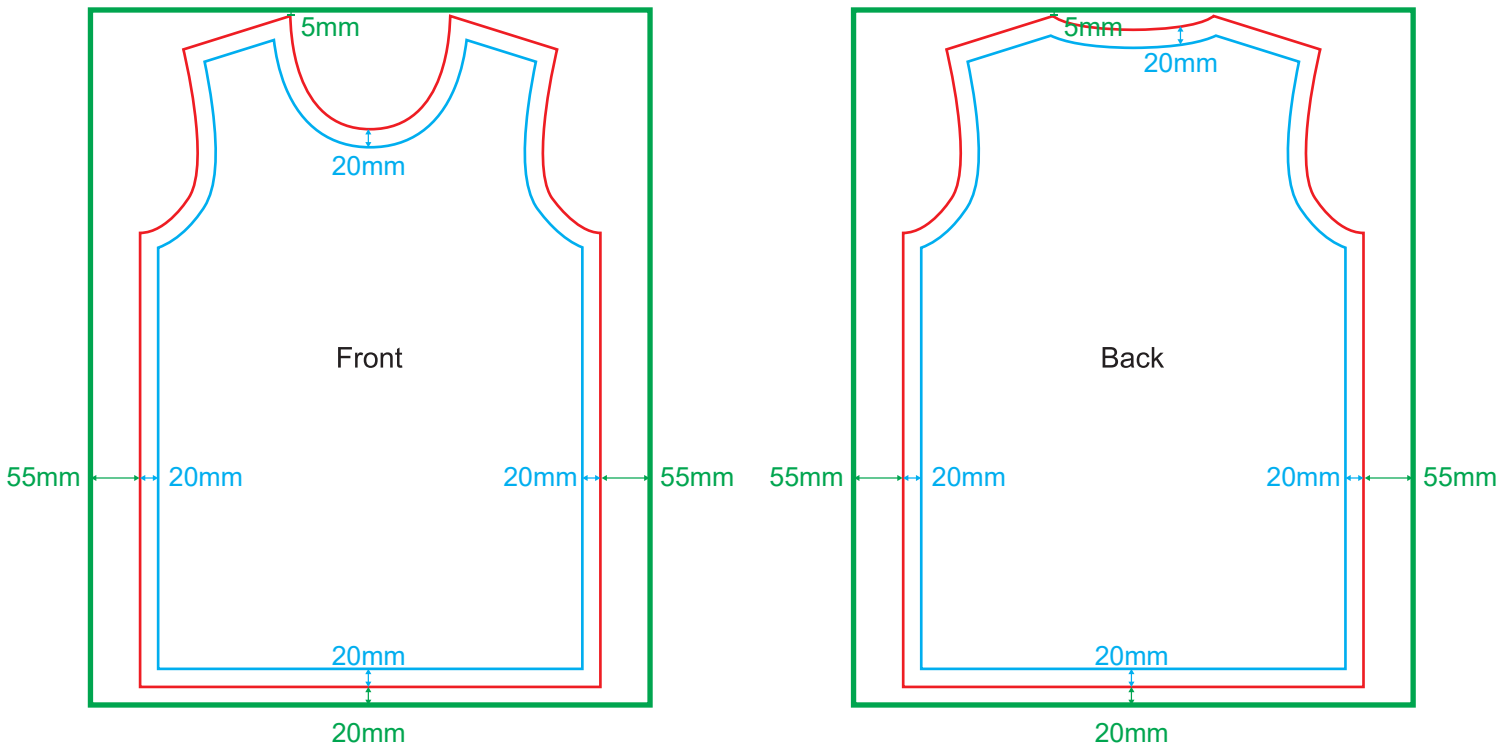
Please use our website e-template to design the artwork in order to ensure there is error free. Only M Size Template is provided to design, while our designer team will help you adjust to others of your T-Shirt order size.

Type	Side	Safe Zone Size (Width x Height)	Open Size (Width x Height)	Bleeding Size (Width x Height)
Round Neck	Front	470mm x 697mm	510mm x 743mm	620mm x 770mm
	Back	470mm x 697mm	510mm x 743mm	620mm x 770mm

Safe Zone : **20mm** from all sides of the edge

Bleeding : **5mm** from Left , Right , Top edge

: **20mm** from Bottom edge



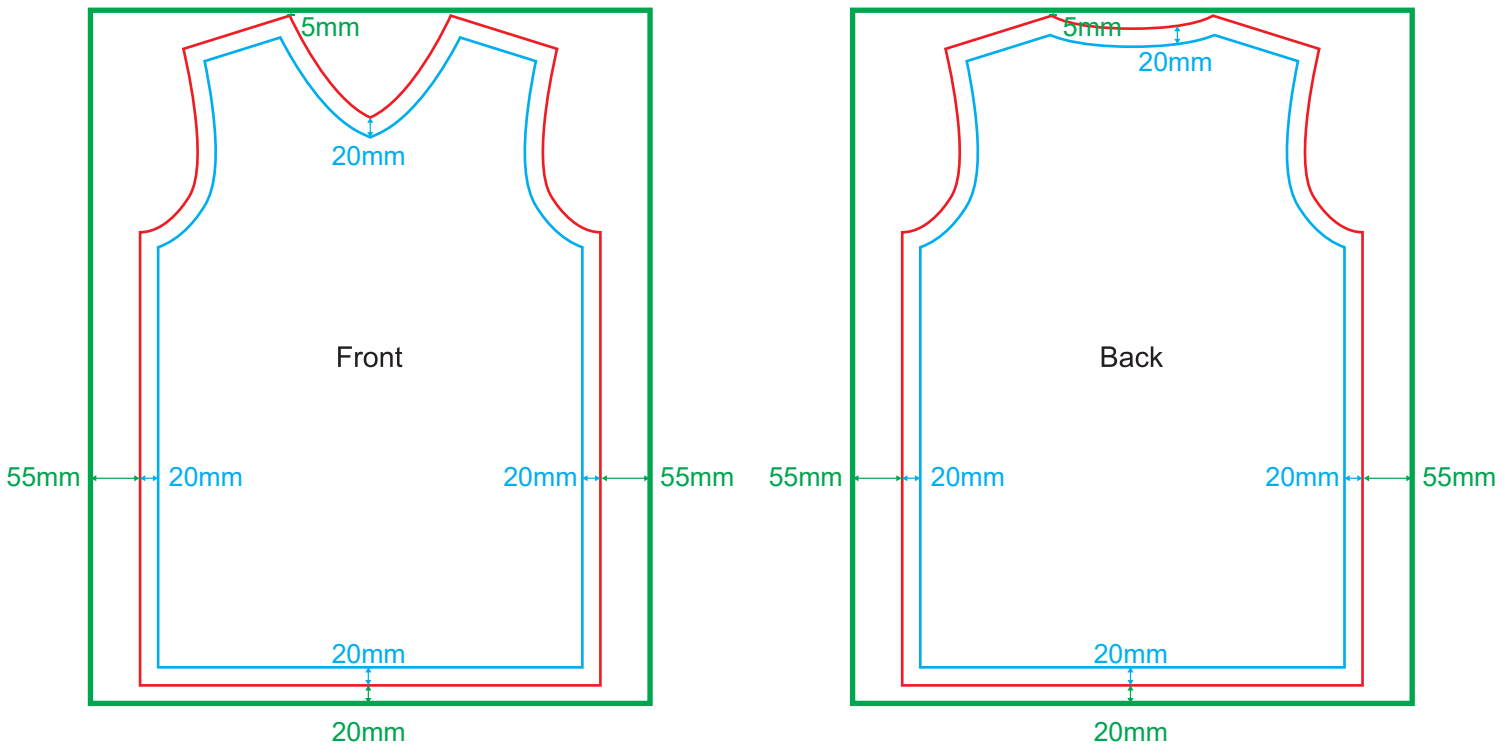
**GENERAL ARTWORK DIMENSION - V NECK**

Type	Side	Safe Zone Size (Width x Height)	Open Size (Width x Height)	Bleeding Size (Width x Height)
V Neck	Front	470mm x 698mm	510mm x 742mm	620mm x 768mm
	Back	470mm x 698mm	510mm x 742mm	620mm x 768mm

Safe Zone : **20mm** from all sides of the edge

Bleeding : **5mm** from Left , Right , Top edge

: **20mm** from Bottom edge



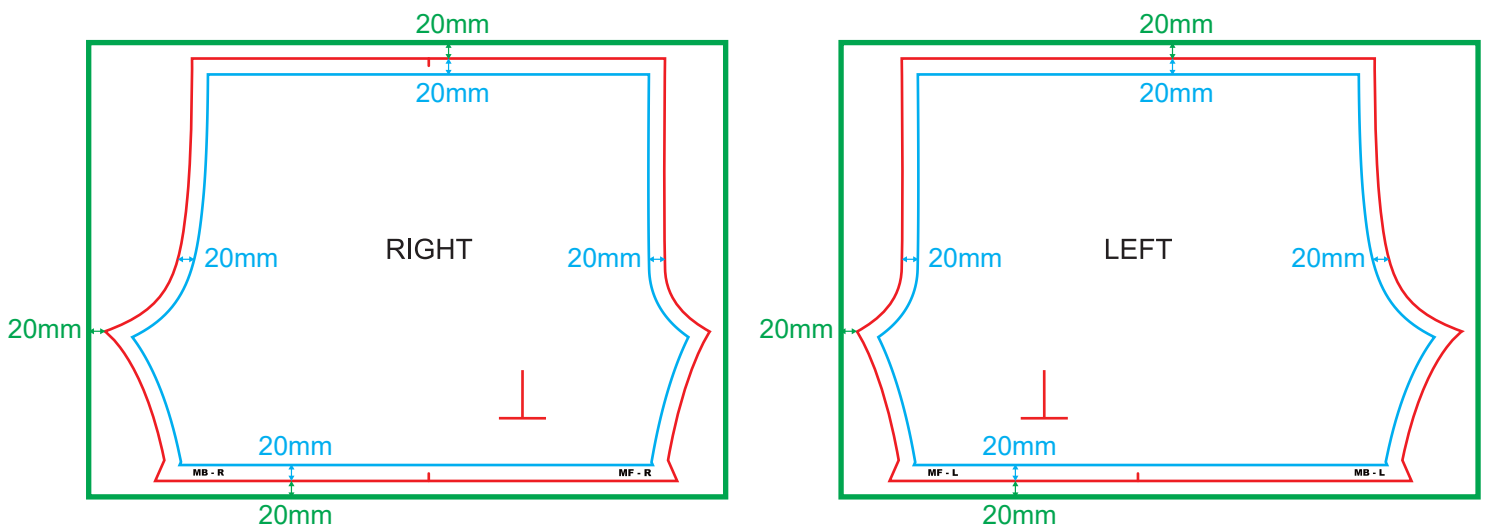
**GENERAL ARTWORK DIMENSION - SOCCER PANTS**

Type	Side	Safe Zone Size (Width x Height)	Open Size (Width x Height)	Bleeding Size (Width x Height)
Sublimation Soccer Pants	Left	698mm x 491mm	760mm x 531mm	800mm x 571mm
	Right	698mm x 491mm	760mm x 531mm	800mm x 571mm

Safe Zone : **20mm** from all sides of the edge

Bleeding : **20mm** from Left & Right

: **20mm** from Top & Bottom



**\_|\_** is the suggested area for logo

**GENERAL ARTWORK DIMENSION - COLLAR WITH BUTTON**

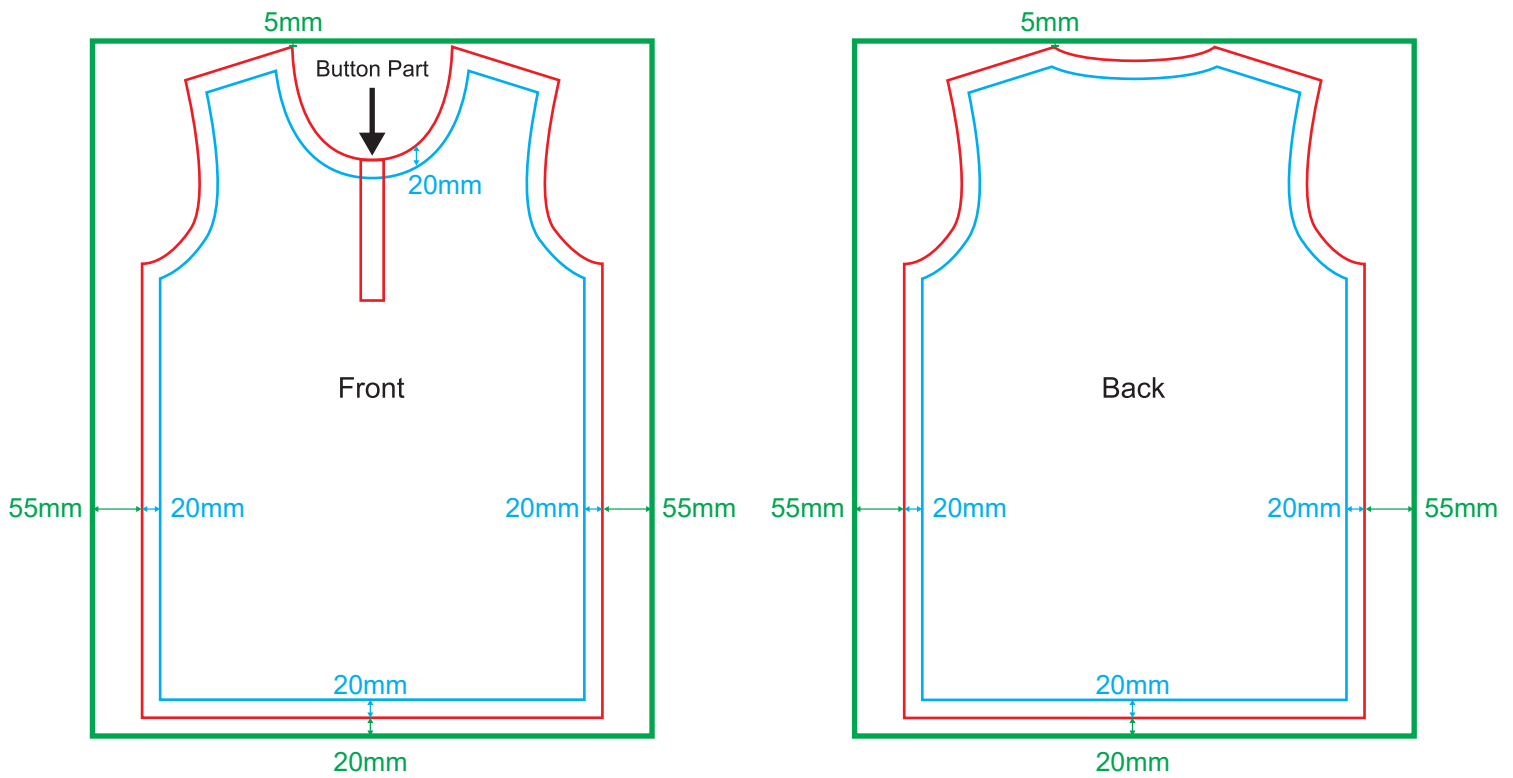
Type	Side	Safe Zone Size (Width x Height)	Open Size (Width x Height)	Bleeding Size (Width x Height)
Collar with Button	Front	470mm x 697mm	510mm x 743mm	620mm x 770mm
	Back	470mm x 697mm	510mm x 743mm	620mm x 770mm

Safe Zone : **20mm** from all sides of the edge

Bleeding : **55mm** from Left, and Right

: **5mm** from Top edge

: **20mm** from Bottom edge



\*Button part not encourage to put in artwork. (as it will have cutting and sewing tolerance)

**GENERAL ARTWORK DIMENSION - MANDARIN COLLAR**

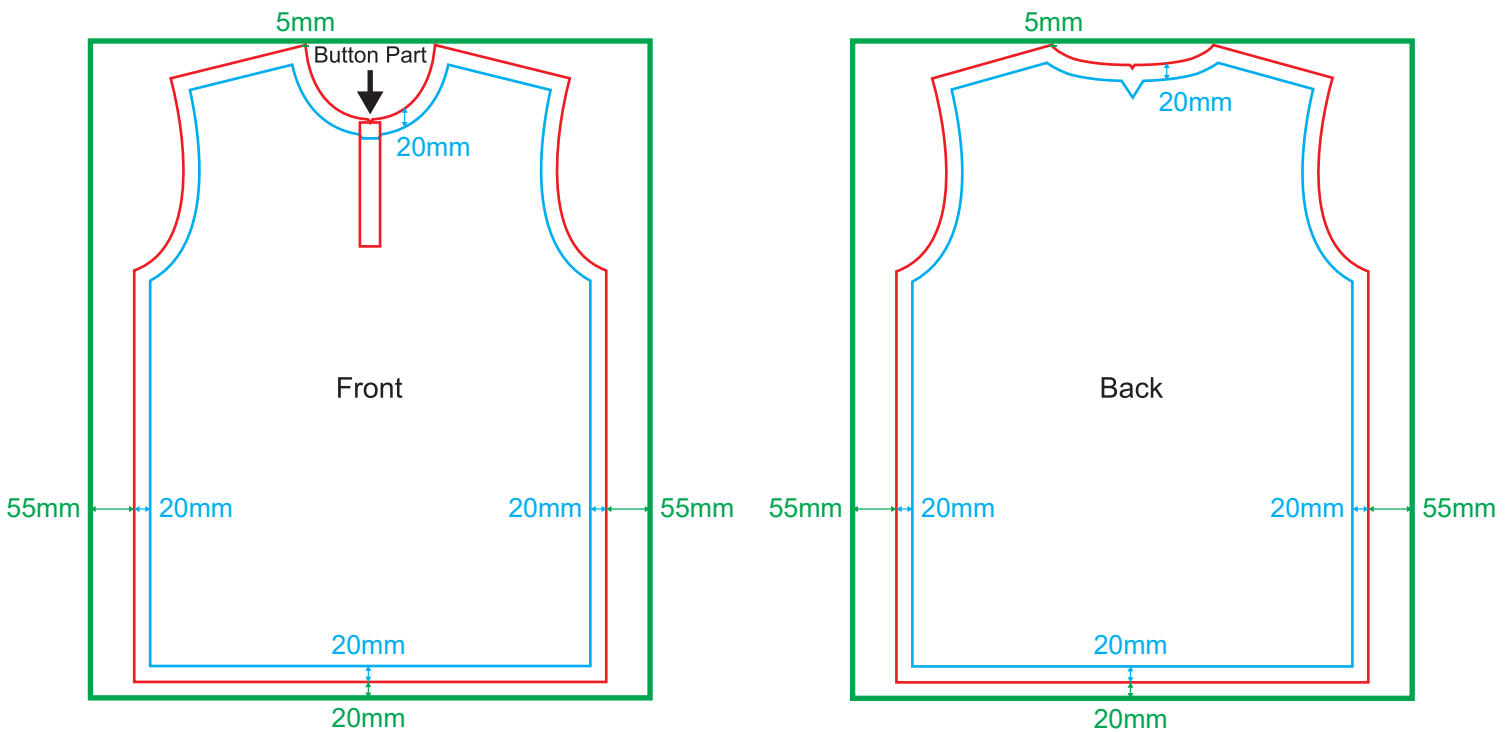
Type	Side	Safe Zone Size (Width x Height)	Open Size (Width x Height)	Bleeding Size (Width x Height)
Mandarin Collar	Front	553mm x 755mm	593mm x 800mm	703mm x 825mm
	Back	553mm x 755mm	593mm x 800mm	703mm x 825mm

Safe Zone : **20mm** from all sides of the edge

Bleeding : **55mm** from Left, and Right

: **5mm** from Top edge

: **20mm** from Bottom edge



\*Button part not encourage to put in artwork. (as it will have cutting and sewing tolerance)

**GENERAL ARTWORK DIMENSION - RETRO V COLLAR**

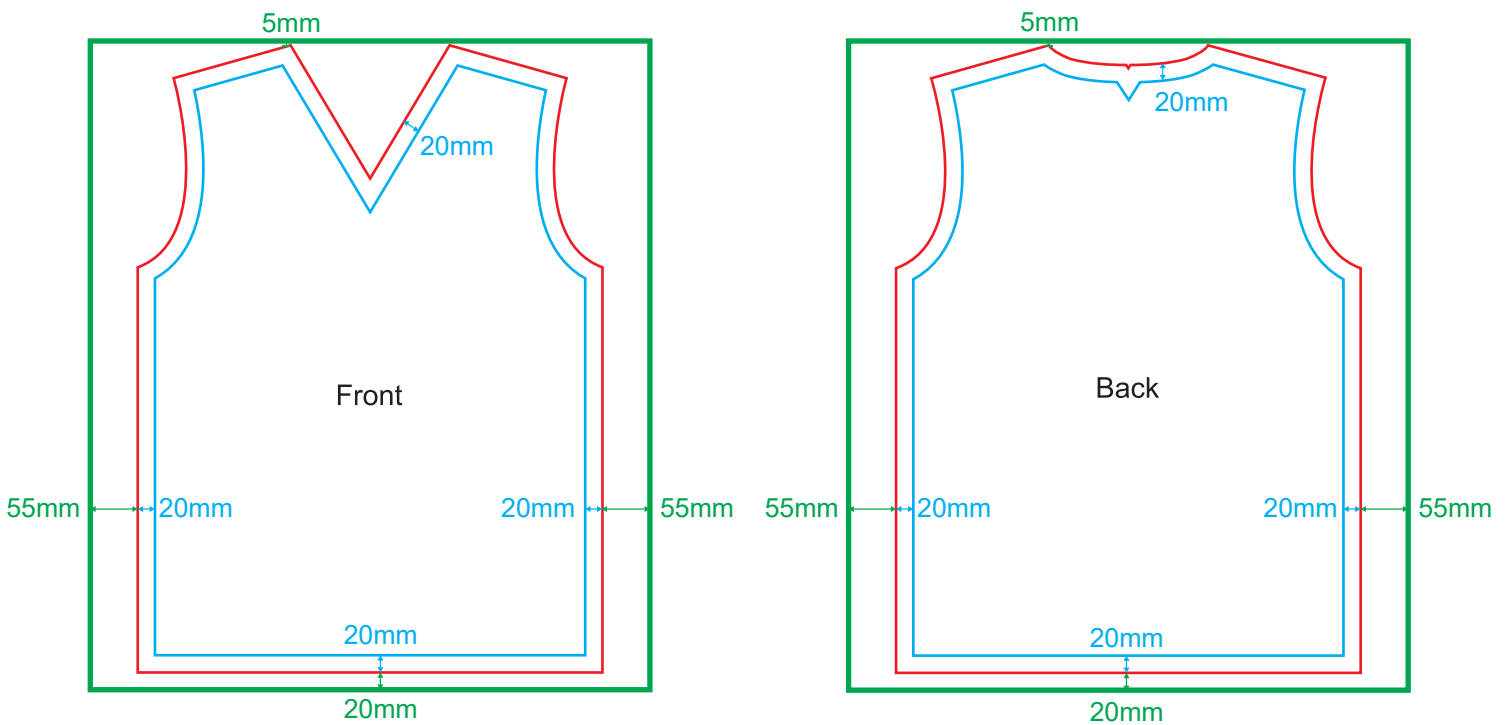
Type	Side	Safe Zone Size (Width x Height)	Open Size (Width x Height)	Bleeding Size (Width x Height)
Retro V Collar	Front	499mm x 684mm	539mm x 727mm	649mm x 752mm
	Back	499mm x 684mm	539mm x 727mm	649mm x 752mm

Safe Zone : **20mm** from all sides of the edge

Bleeding : **55mm** from Left, and Right

: **5mm** from Top edge

: **20mm** from Bottom edge



Retro V Neck Inner Collar (triangle part): White / Black  
 \*only can choose one - either White or Black

**GENERAL ARTWORK DIMENSION - RETRO FLAT COLLAR**

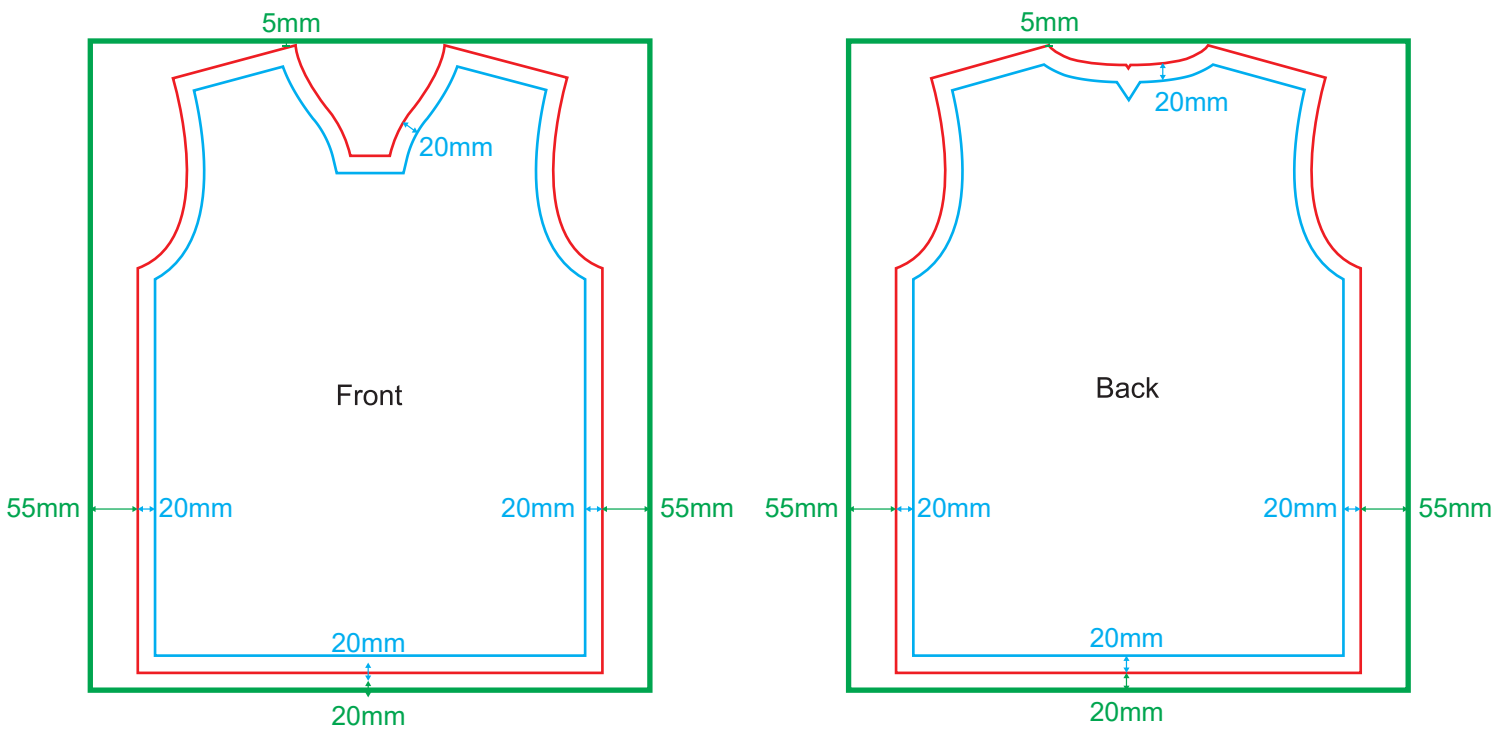
Type	Side	Safe Zone Size (Width x Height)	Open Size (Width x Height)	Bleeding Size (Width x Height)
Retro Flat Collar	Front	498mm x 682mm	538mm x 727mm	649mm x 752mm
	Back	498mm x 682mm	538mm x 727mm	649mm x 752mm

Safe Zone : **20mm** from all sides of the edge

Bleeding : **55mm** from Left, and Right

: **5mm** from Top edge

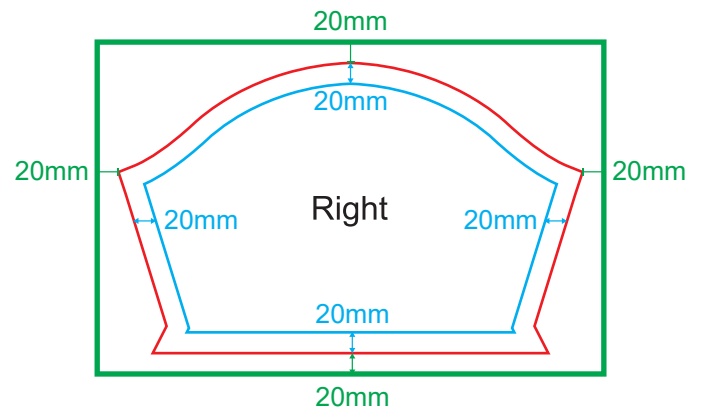
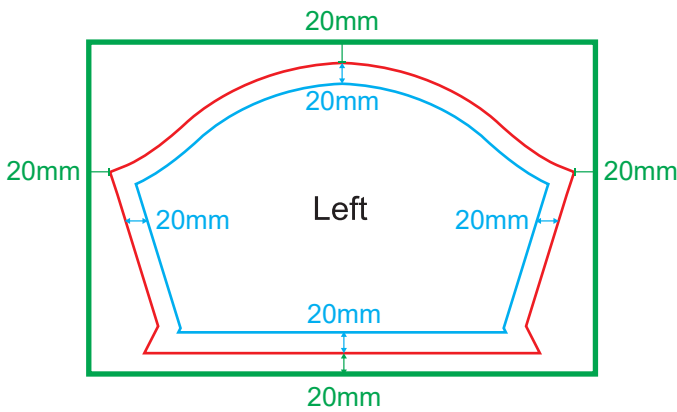
: **20mm** from Bottom edge



Retro Flat Neck Inner Collar (triangle part): White / Black  
 \*only can choose one - either White or Black

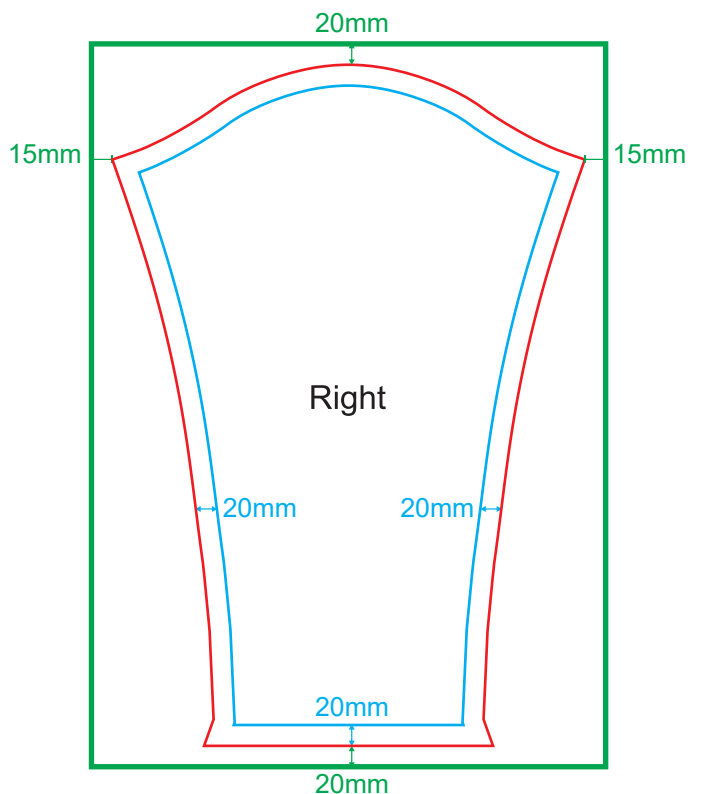
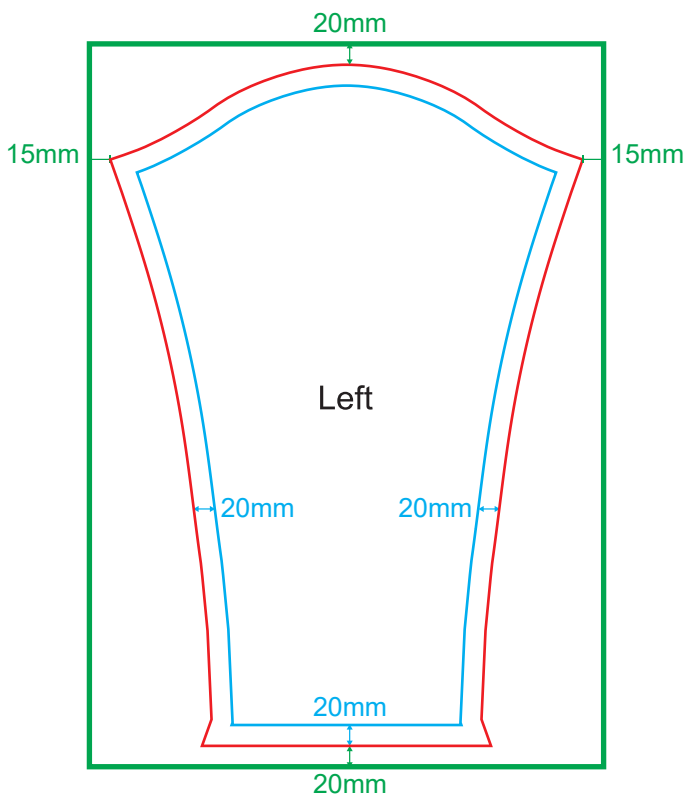
**GENERAL ARTWORK DIMENSION - SHORT SLEEVE**

Type	Side	Safe Zone Size (Width x Height)	Open Size (Width x Height)	Bleeding Size (Width x Height)
Short Sleeve	Left	407mm x 239mm	447mm x 279mm	487mm x 319mm
	Right	407mm x 239mm	447mm x 279mm	487mm x 319mm



**GENERAL ARTWORK DIMENSION - LONG SLEEVE**

Type	Side	Safe Zone Size (Width x Height)	Open Size (Width x Height)	Bleeding Size (Width x Height)
Long Sleeve	Left	413mm x 613mm	453mm x 653mm	493mm x 693mm
	Right	413mm x 613mm	453mm x 653mm	493mm x 693mm

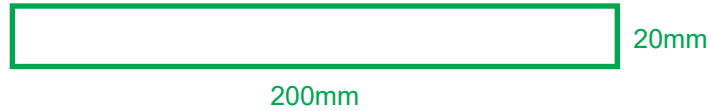




**GENERAL ARTWORK DIMENSION - NECK LINE / COLLAR**

Type	Bleeding Size (Width x Height)
Neck Line / Collar	200mm x 20mm

only 1 solid color is allow



## STANDARD CHECKLIST

### ARTWORK

- Vector & JPEG (minimum 300dpi for JPEG format)

### FONTS

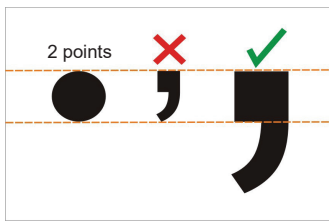
- Normal Font Size: Minimum 10 pts
- Reverse Font Size: Minimum 15 pts

### LINE WEIGHT

- Normal Line Thickness: Minimum 1 pts
- Reverse Line Thickness: Minimum 2 pts

### DOT

- Normal Dot Thickness: Minimum 2 pts



- Reverse Dot Thickness: Minimum 3 pts
- Gap Between Line and Dot: Minimum 2pts



### COLOR

- Individual Font and Line color must be in ONE COLOR only, to avoid wording blurry problem.
- CMYK max 240% to avoid Ink dirty.

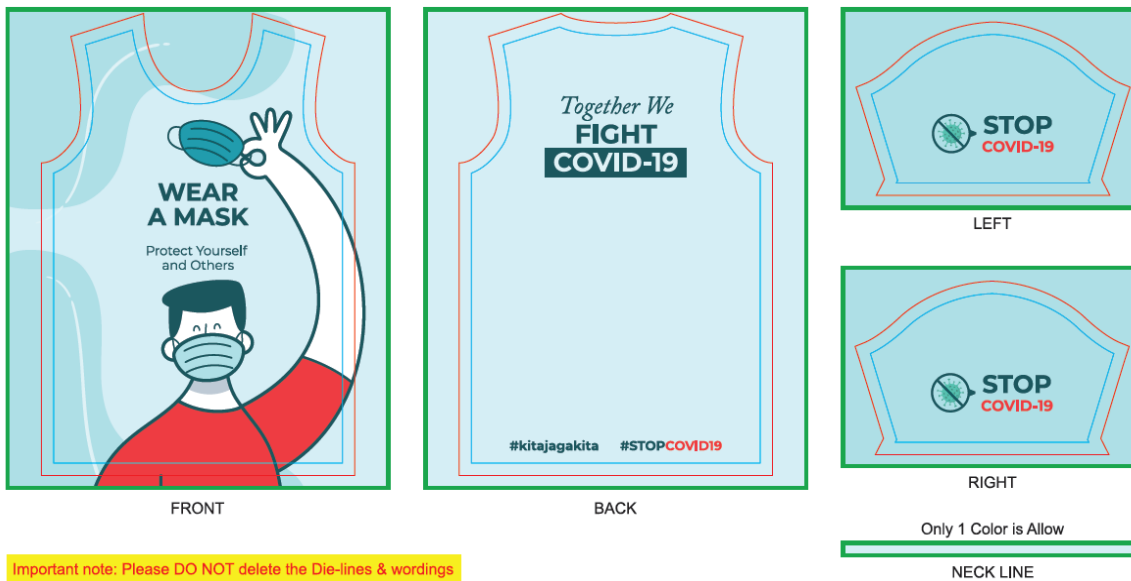
### Important Notes for 4C Printing:

Printing onto T-Shirt is significantly different than printing on paper, It is using sublimation process onto the material. The print output couldn't exactly same as the artwork you have submitted through online due to sublimation technology, the product outcome will be slightly grainy, darker or lighter and the resolution couldn't 100% clear as the screen preview. While lighter shades outcome might appear lighter or less visible compare to screen artwork.

**FILE PREPARATION**

Print Color	Print Side	File
4C	4C + 4C (Both Sides)	<p><u>only 1 file (1 page), consist of:</u></p> <p><b>Front Artwork</b>  <i>Round Neck / V Neck / Collar with Button / Mandarin Collar / Retro V Collar / Retro Flat Collar</i></p> <p><b>Back Artwork</b>  <i>Round Neck / V Neck / Collar with Button / Mandarin Collar / Retro V Collar / Retro Flat Collar</i></p> <p><b>Left Artwork</b>  <i>Long Sleeve / Short Sleeve / Soccer Pants</i></p> <p><b>Right Artwork</b>  <i>Long Sleeve / Short Sleeve / Soccer Pants</i></p> <p><b>Neck Line (Only 1 color is allow)</b></p>

Example:



Important note: Please DO NOT delete the Die-lines & wordings