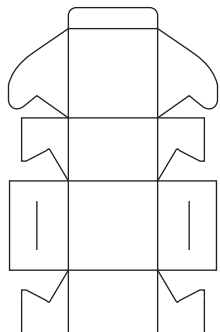


PRODUCT SPECIFICATION

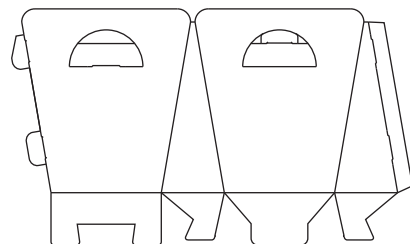
Model / Size (mm) (Open Size)	Dimension (mm) W(width) x D(depth) x H(height)	Lock Type	Paper Type	Print Side	Printing Colour (Front & Back)	Finishing		Packing	Quantity (pcs)	Process Days (excluding order day & receive day)
						Compulsory	Optional			
GB 001 199 x 310	85 x 85 x 60	Self Lock Type	Gloss Art Card (1 side coated) - 260gsm - 300gsm Gloss Art Card (2 sides coated)* - 310gsm Fine Card* - Metal Ice 250gsm *Only available for quantity 5,000pcs and below	1 side	4C (Front)	Die-Cutting - GB 001 - GB 005 Choose either one (1 side)*: - Gloss/Matte Lamination - UV Varnish - Gloss Water-based Varnish *Only applicable for Gloss Art Card 260gsm & 300gsm (1 side coated)	Matte / Gloss Lamination - 1 side Only applicable for Gloss Art Card 310gsm (2 sides coated)	Loose	250 500 1,000 2,000 3,000 4,000 5,000 6,000 7,000 8,000 9,000 10,000 *Custom	Normal Order 4 days (50 - 5,000pcs) For Gloss Art Card 310gsm (2 sides coated) & Metal Ice 250gsm Cut Off Time : 3pm

Remarks:

1. When choosing 1 side finishing, it will be applied on the printed front side of product.
2. Creasing will be provided for all types card of material, orders will be delivered without folding.
3. To calculate your delivery days, please refer to **Delivery Schedule** at our website.
4. For full details of how to prepare your artwork, please refer to our **Artwork Specs**.



GB 001



GB 005